

ROST DE DILATATIE DALA DE BETON EXPANSION JOINT FOR CONCRETE SLAB SC. 1:10

Intre suprafata talei si hidroizolatie se interpune o foaie de hartie Kraft
interposing one Kraft paper between the metallic sheet surface and waterproofing

Sapa de protectie din beton armat
Protection blanknet out of reinforced concrete

Plasa sudata $\phi 6-100 \times 100$ mm
Wiremesh $\phi 6-100 \times 100$ mm

Cordon elastic $\phi 3$ cm
Elastic ribbon $\phi 3$ cm

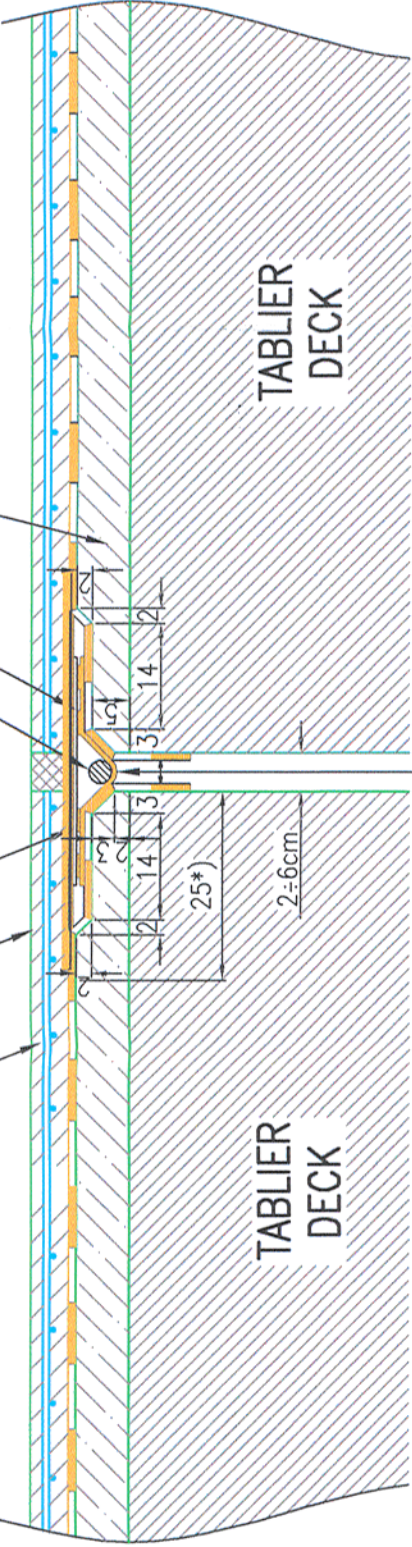
Tola metalica vopsita cu grund pasivant
Metallic sheet painted with pasivator primer

Beton de panta
Slope concrete

TABLIER
DECK

TABLIER
DECK

Banda elastica de rost cu latimea de 50cm
Joint elastic band-50cm width



OBSERVATIE:

- *) pe aceasta lungime sapa de protectie se toarna dupa realizarea acoperirii de rost.
ATTENTION:
- *) on this length the protection blanknet is casting after joint cover execution.

MEMBRANA PENTRU HIDROIZOLATII

- Conditii de utilizare:
- grosimea minima a membranei 4mm;
 - realizata pe baza de bitum aditivat;
 - sa prezinte strat din granule minerale care sa asigure aderența betonului de protectie;
 - sa se aplice cu fiacara in aderența totala la suport.

Caracteristici fizico-mecanice:

- rezistența la tracțiune - longitudinal min. 1100N/5cm;
- rezistența la tracțiune - transversal min. 900N/5cm;
- alungire la rupere - longitudinal min. 55%;
- alungire la rupere - transversal min. 55%;
- rezistența la poansonare statica - > 20kg(L4);
- flexibilitate la temperaturi scazute (dorn cu diametru 20mm) - fara fisuri la -20°C;
- aderența la suport - min. 0.53 MPa.

WATERPROOFING MEMBRANE

- Using conditions:
- the minimum membrane thickness 4mm;
 - additive bitumen membrane;
 - it shall have a layer with mineral granule which should provide the protection concrete adherence;
 - it shall be applied by flame gluing in total adherence with the support.

Physical-mechanical properties:

- tensile strength - longitudinal min. 1100N/5cm;
- tensile strength - transversal min. 900N/5cm;
- elongation ultimate - longitudinal min. 55%;
- elongation ultimate - transversal min. 55%;
- static punching resistance - > 20kg(L4);
- low temperature flexibility (mandrel with 20mm diameter) - without cracks at -20°C;
- support adherence - min. 0.53 MPa.

ACOPERIRE DE ROST

Materialul din care este facuta membrana de acoperire a rostului va fi compatibil cu sistemul de hidroizolatie ales si va fi etansa, nepermitand scurgeri ale apei in rost.
Caracteristicile materialelor utilizate sunt:

- Banda de rost:
 - Alungire la rupere: > 350 %
 - Impermeabilitate la apa 10bar
 - Mentine caracteristicile fara modificari de la -35° la +80° C
- Cordon de rost:
 - Alungire la rupere: > 200%
 - Flexibilitate la rece fara fisuri la - 20°C
- Tola metalica S235JO, grosime 5mm, latime 300mm

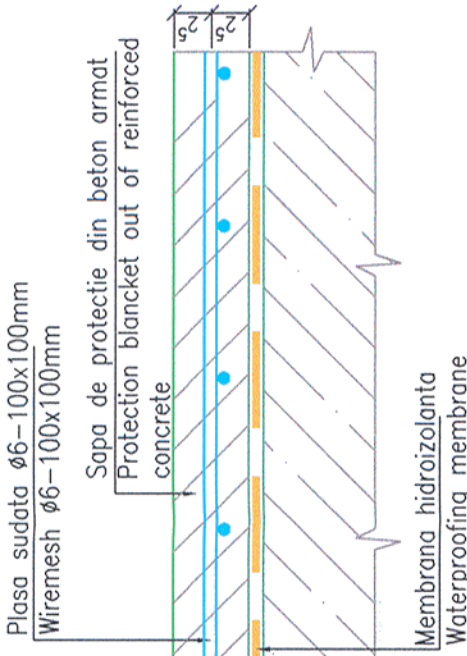
JOINT COVER

The material forming the joint cover membrane will be compatible to the selected waterproofing system and will be tight so as not to allow any water leakage inside the joint.
The characteristics of the materials used are:

- Joint band:
 - Elongation: > 350 %
 - Water proofing: 10bar
 - Maintains the characteristics with no modifications from -35° to +80° C
- Joint cord:
 - Elongation at break: > 200%
 - Flexibility at cold with not cracks at - 20°C
 - Metallic roll 0L37-2n, thickness 5mm, width 300mm

HIDROIZOLATIE SI SAPA DE PROTECTIE WATERPROOFING AND PROTECTION BLANKNET

Sc. 1:5



LEGENDA BETOANELOR/CONCRETE LEGEND conform NE 012-1:2007/SR EN 206-1

- BETON C30/37 - Clasa de expunere XC3+XF1, agregate D_{max} 22 DALA DE BETON/CONCRETE SLAB
- BETON C25/30 - Clasa de expunere XC4+XF1+XM1, agregate D_{max} 16. SAPA DE PROTECTIE A HIDROIZOLATIEI SI PREDALE WATERPROOFING PROTECTION AND PRESLABS
- BETON C16/20 - Clasa de expunere X0+XF3, agregate D_{max} 16. DREN, BETON DE PANTA, DE EGALIZARE DRAINAGE, SLOPE, LEAN CONCRETE

Prezentul plan anuleaza si inlocuieste versiunea anterioara
This plan cancels and replaces previous version



MINISTERUL TRANSPORTURILOR
BENEFICIAR / BENEFICIARY:
COMPANIA NATIONALA DE CAI FERATE "CFR" SA



PROIECTANT / DESIGNER:

Verificator / Expert Checker / Expert	Cerinta Requirement	Semnatura Signature	Referat / Expertiza Report / Expertise
PROIECTANT / DESIGNER:		Semnatura Signature	
Data Date	Data Date		
Aprobat Approved	Sef de echipa Team leader	C. Teodorescu	01.2013
Verificat Checked	Expert Cheie Key Expert	R. Tudorascu	01.2013
Aprobat Approved	Adjunct Sef de echipa Deputy Team leader	A.M. Baicu	01.2013
Proiectat Designed	Inginer Engineer	T. Mihali	01.2013
"Reabilitarea liniei c.f. Frontiera - Curtici - Simeria, parte componentă a coridorului IV Pan - European pentru circulația trenurilor cu viteză maximă de 160 km/h" Tronsonul 2-B : cap Y Bărzava - cap Y Ilteu "Rehabilitation of the Railway Line Border - Curtici - Simeria , component Part of the IV Pan - European Corridor for the Trains Circulation with maximum speed of 160 km/h" Section 2-B : end Y Bărzava - end Y Ilteu		Semnatura Signature	
Denumire desen / Drawing name: HIDROIZOLATIE SI ROST DE DILATATIE DALA DE BETON WATERPROOFING AND EXPANSION JOINT FOR CONCRETE SLAB		Faza / Phase: PTH+CS / TD+TS	
Scara / Scale 1:10	Revizia / Revision 1 / 04.2013	Cod desen / Drawing Code PT.02.02.00.PO.19	Nr / No 19